

SMD dice assembly kit

There are 7 LEDs on the board that are arranged like the dots on a dice.

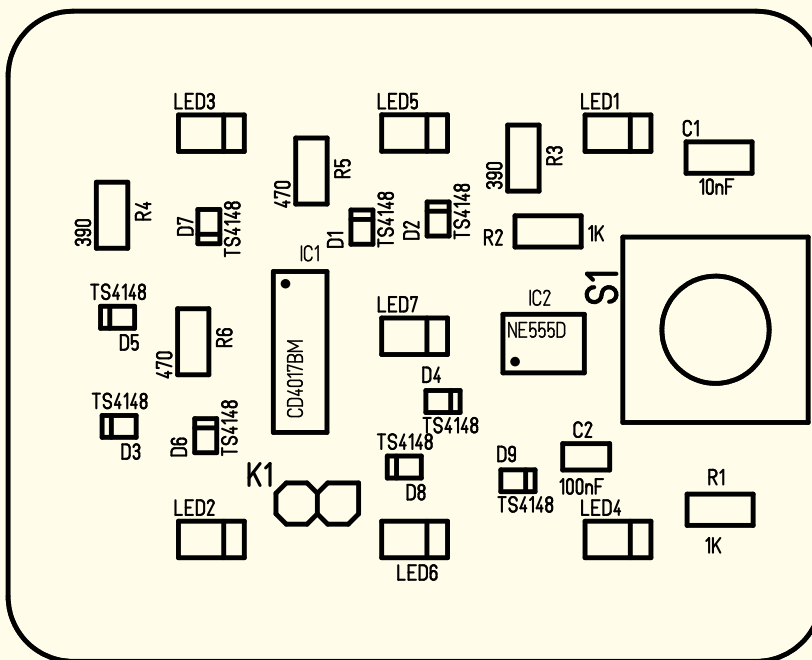
To start the dice, press the button.

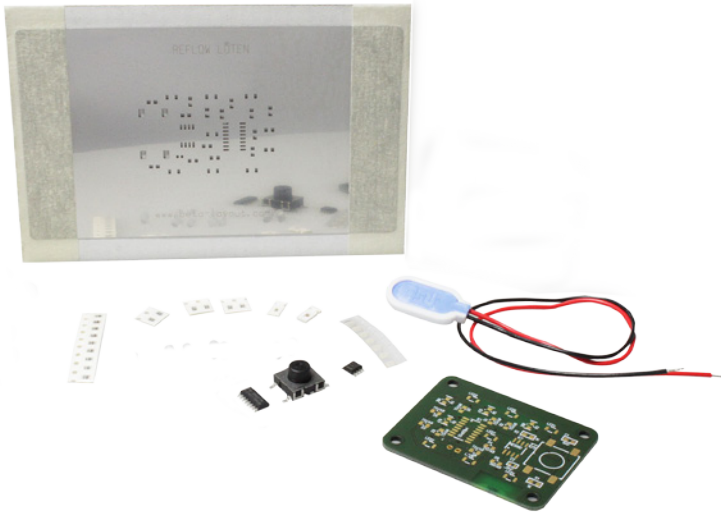
Once you release the button, the dice number that is thrown according to the random principle is displayed.

Bill of materials

Name	Value	Package	Qty
C1	10nF	0805	1
C2	100nF	0603	1
D1, D2, D3, D4, D5, D6, D7, D8, D9	TS4148	0805	9
IC1	CD4017BM	SOIC16/WB3,9/P1,27	1
IC2	NE555D	SO8/WB3,9/P1,27	1
K1	Battery clip pushbutton		1
LED1, LED2, LED3, LED4, LED5, LED6, LED7	LED-SMD1206_ROT	1206	7
R1, R2	1K	0805	2
R3, R4	390	0805	2
R5, R6	470	0805	2
S1	SMD button 1618.11	BUTTON 1618.11	1

Component layout of the assembly kit





Assembly kit contents

- Printed circuit board with embedded LXMS31ACNA-009 Murata UHF RFID chip
- Suitable stencil
- 9 V block-battery
- Components

Information about the components

LEDs:

- Note the polarity!
- There is a marker on the underside of the cathode.
- Caution: the marker on the upper side in the LED body marks the anode

Capacitors:

- No polarity
- No imprint!
- Arrangement here: by package type

Resistors:

- No polarity
- Imprint 3900 -> 390 ohm
- Imprint 4700 -> 470 ohm
- Imprint 1001 -> 1 kilo-ohm

Diodes:

- Note the polarity
- Cathode is marked.

SMD button:

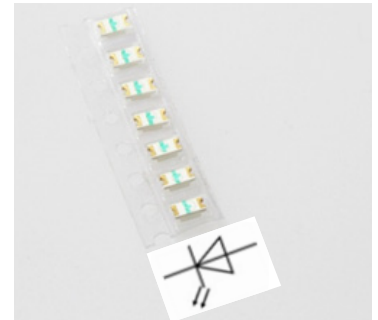
- No polarity

Battery clip pushbutton:

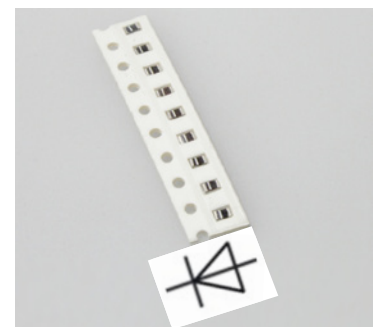
- Note the polarity!
- See marker on the printed circuit board.

ICs:

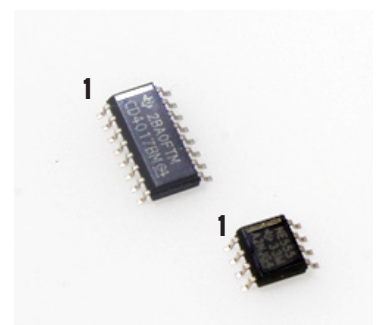
- Note the polarity!
- Pin 1 is marked.



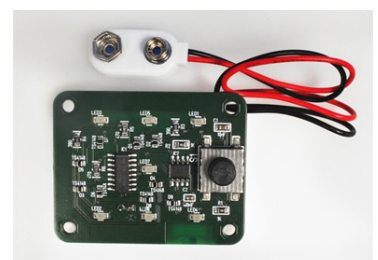
LEDs



Diodes



ICs



Complete assembly board